



DATASHEET

Rocket BlueZone

Secure Terminal Emulation with a Lower Cost of Ownership

- Reduce costs with flexible licensing, easier administration, and lower TCO
- Protect your critical business systems and data with enhanced security features
- Minimize business disruptions with proven migration and customization tools
- Meet the needs of your workforce and your organization from anywhere with mobile and zero-footprint options

Many organizations that rely on terminal emulators have spent years—or even decades—configuring and customizing emulation tools to best suit their users' needs. The thought of moving to a new solution can be so daunting that it's easy to question whether the potential business disruption is worth the cost savings.

Rocket® BlueZone terminal emulation solutions provide the flexibility and functionality IT leaders need for a smooth transition. You can choose from multiple licensing models for the quickest path to ROI. Proven tools and methodologies help you quickly migrate from your existing solution while preserving scripts, macros and customizations. The wide range of BlueZone security options offers the level of systems and data protection that's right for your business.

BlueZone solutions provide secure, full-function desktop and browser-based emulation for most common terminal-based systems, including IBM Z, IBM i, and UNIX/Linux VT.





► Reduce costs with flexible licensing, easier administration, and lower TCO

Our flexible, all-inclusive licensing options can help to significantly lower your terminal emulation total cost of ownership. We offer concurrent or per-seat licensing as well as perpetual and subscription options, and our license and maintenance pricing is lower than comparable solutions. Your maintenance or subscription agreement includes upgrades as they're released, which you can download from the Rocket customer portal.

BlueZone can also help you save money on the back end. With our centralized distribution features, IT can control user access and settings from a single tool, reducing onsite administration and support overhead by 25-30%, re-allocating resources for more strategic projects. BlueZone clients have a very small footprint that requires little storage space. And BlueZone Web does away with client installations and browser plugins altogether, for an even lighter administrative load.

Carilion Health: Painless Rocket Terminal Emulation

Carilion Health is a large healthcare provider in the eastern United States, supporting 8,000 users on its network. The first phase of the company's BlueZone rollout deployed quickly and without disruption to ongoing business tasks. Targeted at 1,000 users, the project focused on eliminating repetitive manual steps for employees. According to the project lead, Carilion was "... able to duplicate every keyboard mapping from our existing emulator using BlueZone's keyboard mapping facility."

► Protect your critical business systems and data with enhanced security features

Rocket BlueZone solutions include a range of options to help protect the exchange of sensitive data in terminal emulation sessions. Solutions are compliant with industry-standard cryptography protocols, giving you the highest levels of security and data integrity possible. BlueZone Secure FTP provides SSL/TLS and SSH connectivity to any compliant FTP server, including IBM i, Z/OS, and Z/VM. As a result, files can be transferred securely from your PC to any FTP server that runs on Windows, IBM i, IBM Z, UNIX, and other platforms.

The optional Rocket BlueZone Security Server helps you reduce risks associated with extending direct internet access to your host systems, providing additional security at the edge of your network. It includes SSL/TLS encryption and authentication services for a range of clients, including FTP, Telnet, and virtually any persistent TCP/IP protocol. As a result, BlueZone solutions support and protect thousands of simultaneous connections.

► Minimize business disruptions with proven migration and customization tools

With more than 25 years of experience in the terminal emulation field, we've helped thousands of companies in numerous industries move away from their in-place solutions—without disrupting business operations.

Our traditional terminal emulation solutions offer proven conversion tools, services, and best practices to help you manage the transition. Rocket BlueZone offers tools to convert macros and scripts from most popular emulators, and our migration specialists are trained to identify potential outliers and issues before the migration process begins. Our tools analyze your current keyboard layouts and configure BlueZone to work exactly like your existing emulator, so there's no need to re-train your users. We even include keyboard layouts for common emulators.

If you're not using an emulator that's supported out of the box, or just need some help getting started, the Rocket team is ready to assist. We have extensive experience working with links to third-party applications, as well as migrating homegrown applications and replicating customizations by citizen developers, department-specific macros, and inter-spreadsheet macros. We've even helped some of our customers fully automate their conversion process.



Rocket BlueZone is a secure terminal emulation solution that can protect your critical business systems and lower your total cost of ownership.

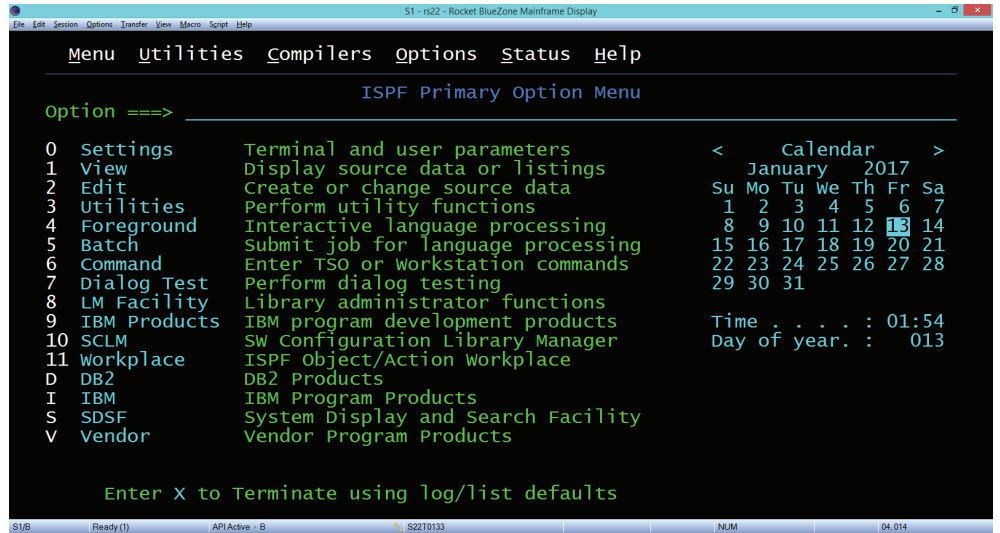


Figure 1: Rocket BlueZone Terminal Emulation Desktop-Based Session

Rocket BlueZone Web empowers your employees to be more productive and offer better customer support by immediately accessing inventory anywhere, on any device. Rocket BlueZone Web is a zero-footprint terminal emulator that delivers real-time access to enterprise applications via HTML5 in a browser.

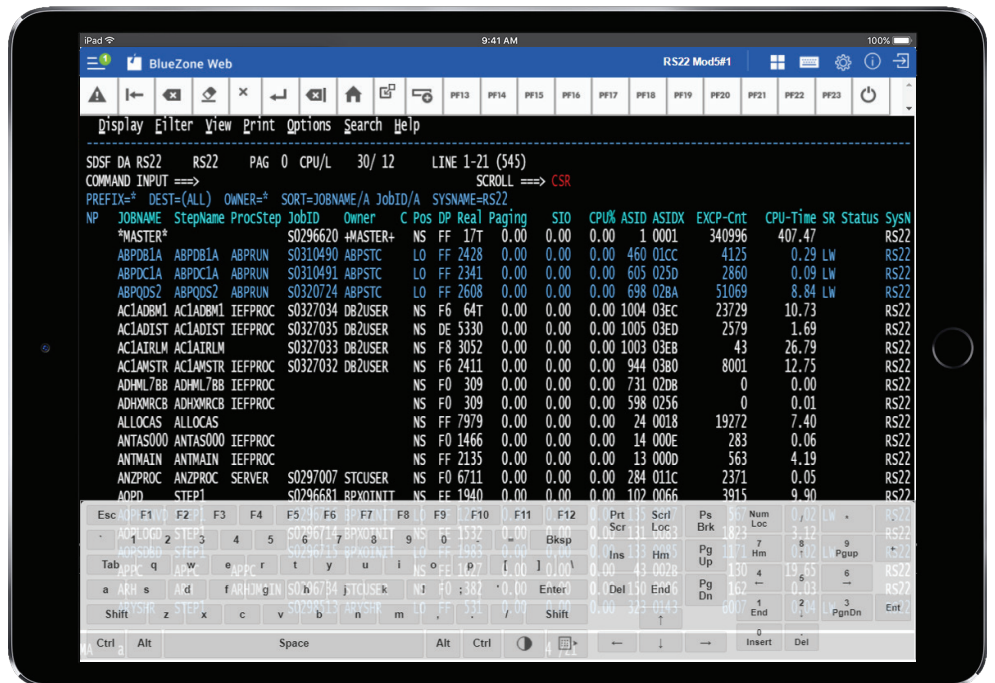


Figure 2: Rocket BlueZone Web terminal emulator shown with customizable keyboard on a tablet

Tech Specs

ROCKET BLUEZONE

■ Operating Systems:

BlueZone can be installed on the following Microsoft 32-bit or 64-bit operating systems:

- Microsoft Windows 7, 8.1, 10
- Microsoft Windows Server 2008, 2008 R2, 2012, 2012 R2

Note: BlueZone Unisys UTS Display Emulator and BlueZone Unisys T27 Display Emulator are only available in a 32-bit version. All other BlueZone emulation clients are available in 32-bit or 64-bit versions.

ROCKET BLUEZONE WEB

■ Server Requirements:

- Hardware: 4GB RAM, 500MB free space

■ Operating Systems:

- Microsoft Windows Server 2008 R2, 2012, 2016
- Ubuntu 16.04 LTS
- Red Hat Enterprise Linux (RHEL) 6
- Centos Linux 7
- z/OS 2.1 and later
- Node.js 6.11.2 or a higher version

Note: Node.js is run within Unix System Services on z/OS

■ Supported Browsers:

- Google Chrome
- Mozilla Firefox
- Microsoft Edge
- Apple Safari
- Opera

-  rocketsoftware.com
-  info@rocketsoftware.com
-  US: 1 877 577 4323
EMEA: 0800 520 0439
APAC: 1800 823 405
-  twitter.com/rocket
-  www.linkedin.com/company/rocket-software
-  www.facebook.com/RocketSoftwareInc
-  blog.rocketsoftware.com